



MSD in Switzerland



About MSD

For over 130 years, we have been addressing the world's major health challenges and providing hope in the fight against diseases, for both people and animals. By advancing prevention and innovation across both human and animal health, MSD contributes to healthier communities worldwide.

In Lucerne and in our Innovation and Development Hub in Zurich we bring creative minds together to transform world-class science into life-changing medicines and vaccines.

Our Purpose:

We use the power of leading-edge science to save and improve lives around the world.

Our Aspiration:

We aspire to be the premier research-intensive biopharmaceutical company.

Oncology



Vaccines



Infectious Diseases



Cardiovascular & Cardio-metabolic Disorders



Animal Health





MSD in Switzerland

Facts & figures

- 1963** MSD in Switzerland established
- > 1,000** Employees from 70 nations
- 50 %** Proportion of women
- 40** Clinical studies*
- 3** Locations

* ongoing clinical studies in Switzerland (as of 01/2026)



Schachen

Global Clinical Supplies

MRL (MSD Research Laboratories)

Forensic Laboratory

Zurich, The Circle

Global Innovation and Development Hub

Lucerne

Animal Health

Human Health

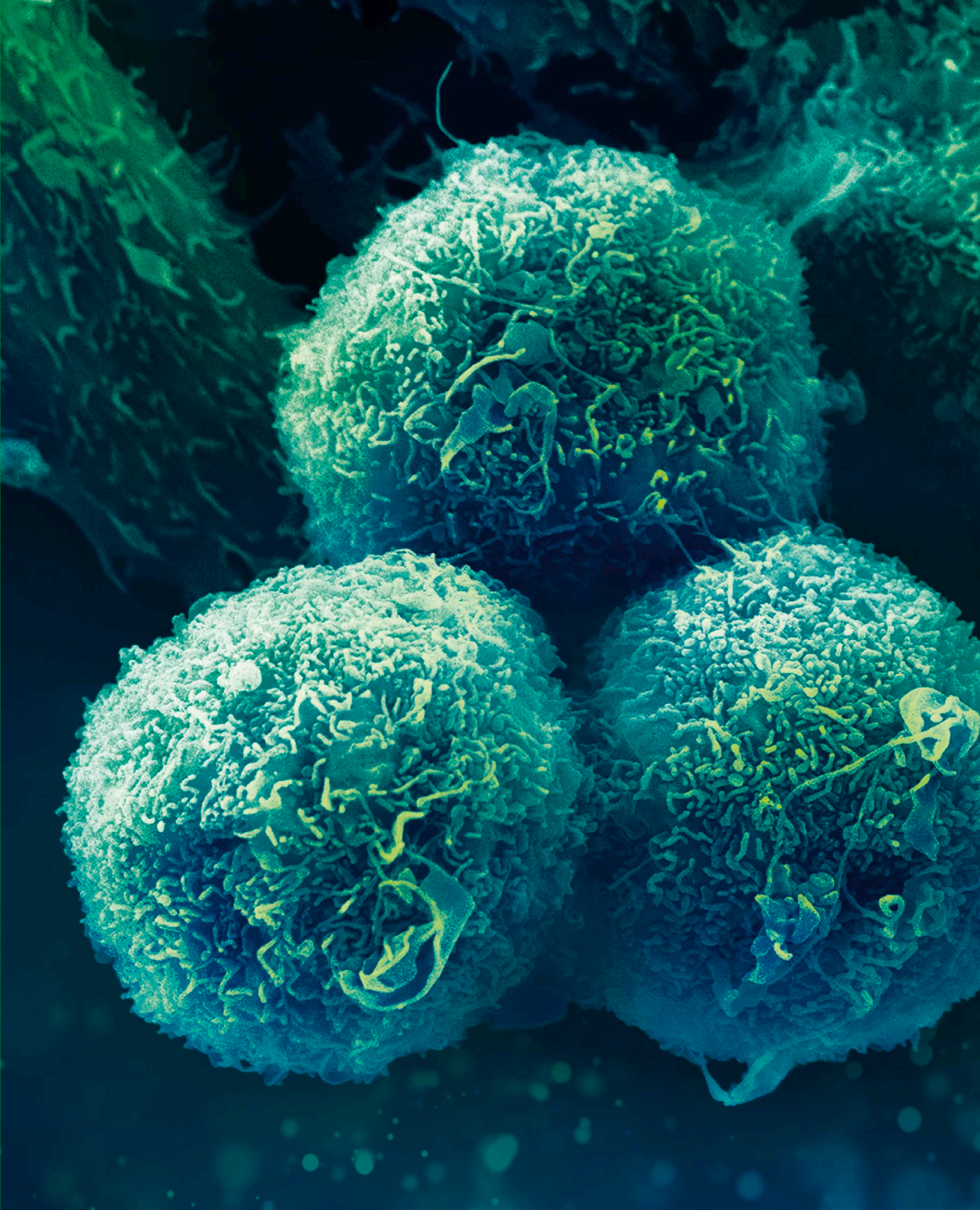
GSF (Global Support Functions)

MMD (MSD Manufacturing Division)

MRL (MSD Research Laboratories)

Our focus areas in Research & Development

The journey to invention and discovery is guided by science – and inspired by patients. Our purpose is to save and improve lives for generations. Our strategy is simple: We follow the science. Our company invested CHF 173.2 million in R&D in Schachen since 2012. We are tireless in seeking solutions for some of the world's most pressing health challenges.





Cancer is one of the most significant health challenges facing our society

Innovation, affordability and equal access are our three priorities for improving cancer care in the future.

Breakthroughs in cancer therapies are offering cancer patients new hope regarding the management of their condition, quality of life and life expectancy, while offering healthcare providers the opportunity to achieve unprecedented outcomes for people living with cancer.

We aim to translate cutting-edge science into breakthrough oncology medicines. Our commitment to research and development has enabled us to establish an exceptionally broad clinical research program which is world leading.

We are collaborating with other pharmaceutical companies to develop the best therapeutic options to treat cancer. Swiss oncologists, researchers, nurses and patients make a significant contribution to this program, and MSD currently conducts 31 clinical trials on 18 different cancer types in Switzerland. Today, our portfolio includes oncology medicines that treat many different cancers, and we are studying many more tumor types in various therapeutic settings.

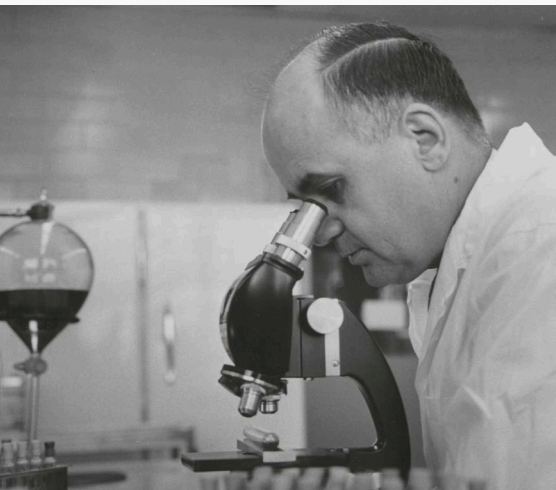
We have a proud legacy in preventing disease through vaccines

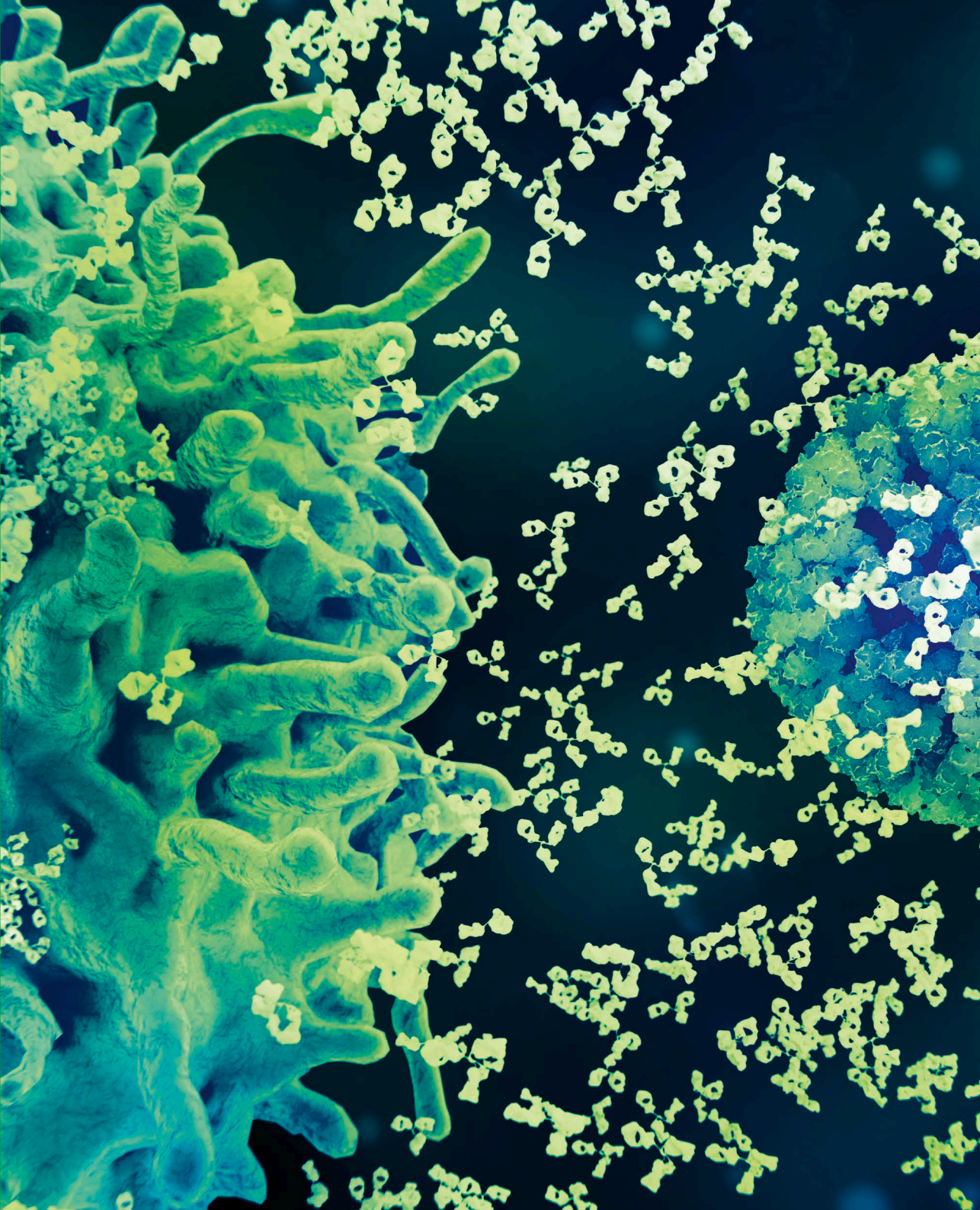
Vaccines are one of the greatest public health success stories in history as they remain the most important preventive healthcare tool throughout life.

Vaccines have always played an important role at MSD, especially due to Dr. Maurice Hilleman (1919 - 2005), widely regarded as the father of modern vaccine science. Over nearly three decades at MSD, Dr. Hilleman developed over 40 vaccines for both people and animals. Of these, nine are included in the set of

14 essential childhood vaccinations that protect against diseases such as Measles, Mumps, Rubella, Hepatitis A, Hepatitis B, Meningitis, and Pneumococcal infections. These vaccines have saved millions of children worldwide from severe illnesses and early death. This commitment is upheld by our dedicated researchers, establishing us as one of the world's premier vaccine manufacturers.

Protecting against infectious diseases is vital especially early in life. However, it is also important to promote vaccination across all ages, since immunizations can continue to protect people and those around them as disease patterns change. While we've made progress in addressing HPV-related diseases, we are still working to eliminate HPV-associated cancers, which continue to affect both women and men. Additionally, we remain committed to advancing protection against Pneumococcal disease and other infections.





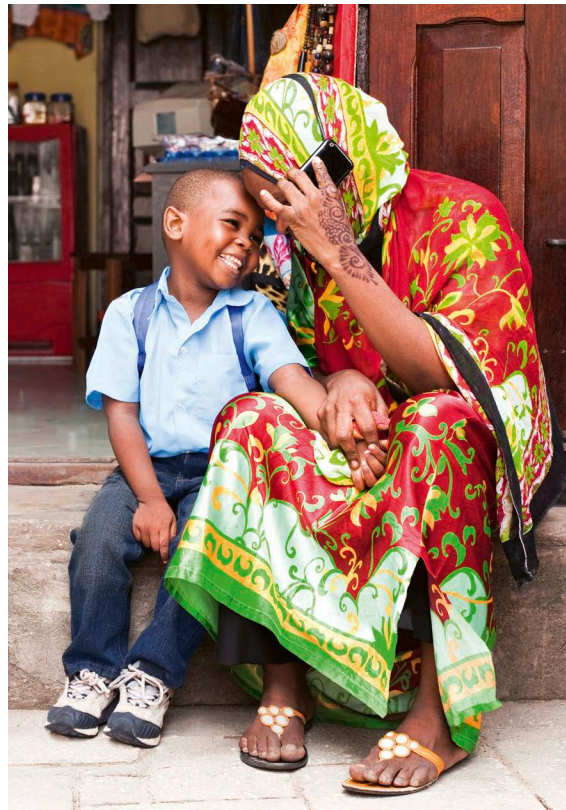


Protecting Communities: Our Commitment to Combating Infectious Diseases

Leveraging cutting-edge science and global partnerships to prevent and treat the world's most challenging infectious diseases.

From developing one of the first antibiotics to discovering and developing vaccines, our focus has always been on prevention and treatment that protect people and strengthen communities. We have pioneered HIV research and have been committed for 35+ years to helping combat the challenges of the HIV epidemic. Yet our work is far from done.

Today, we concentrate on areas of high unmet need where our expertise can make the greatest impact, advancing new medicines and building on our unique capabilities. We collaborate with partners across the globe to address some of the world's most challenging health threats, including Ebola, dengue, and COVID-19 – bringing cutting-edge science and real world experience together to advance solutions.



Driving Innovation, Delivering Impact

For over 60 years, our commitment to scientific innovation has delivered a meaningful impact for patients with cardiovascular and cardio-metabolic disorders.



We introduced our first cardiovascular therapy more than 60 years ago, and we continue our scientific efforts to deeply understand cardiovascular and cardio-metabolic disorders.

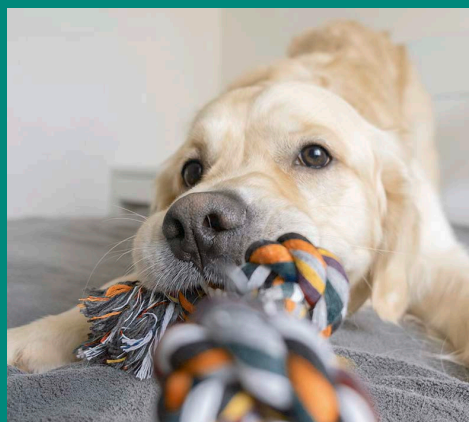
Cardiovascular disorders include diseases such as heart failure and pulmonary arterial hypertension (PAH). Cardio-metabolic disorders include diseases such as type 2 diabetes. They represent some of the most serious health challenges of the 21st century.

Advancements in cardio-metabolic and cardiovascular research can make an impactful difference for patients, and there's still much more work to be done. We strive for scientific excellence and innovation in all stages of research, from discovery through approval and market introduction.

MSD Animal Health, one of the leading research companies in veterinary medicine

As an important part of the One Health approach, MSD supports the precious bond between people and their pets.


MSD Animal Health develops and markets products for the prevention, treatment, and control of diseases in farm animals and pets. With the most innovative and largest product portfolio for animal health in Switzerland, MSD contributes substantially to the well-being of animals.



Following our founder's vision

In 1894 George W. Merck started to run the company his father founded. His entrepreneurial compass focused on courage, believing in science and the vision to provide medicines to those in need.



- 
- 2025**
Approval of human respiratory syncytial virus (RSV) vaccine
First long-acting injectable parasite prevention for dogs launched
 - 2024**
Approval of pulmonary arterial hypertension (PAH) treatment
 - 2019**
Approval of Ebola vaccine
 - 2015**
Long-acting parasite prevention introduced in veterinary medicine
 - 2014**
Approval of innovative targeted cancer therapies
 - 2006**
Approval of HPV vaccine | Approval of Diabetes Type 2 treatment
 - 1996**
Approval of HIV treatment
 - 1986**
Approval of Hepatitis B vaccine
 - 1977**
Approval of Pneumonia vaccine
 - 1971**
Approval of MMR vaccine
 - 1944**
Synthetization of cortisone
 - 1942**
MSD starts penicillin production
 - 1940s**
Animal Health Division established
 - 1936**
Synthetization of vitamin B1
 - 1895**
First diphtheria antitoxin introduced
 - 1891**
Foundation of Merck & Co., Inc.,
New York, NY, USA

MSD has been working to invent and improve health-care for over a century. When George W. Merck's father founded the company in 1891, his goal was to manufacture standardized and thus safer medicines and distribute them to those in need.

Today our company creates innovative medicines that help millions of people and animals around the world.

Our purpose for impact

Operating responsibly is integral to our strategy and underscores our pledge to foster a safe, sustainable and healthy future for communities worldwide.

By integrating sustainability throughout our operations, we deliver value for our business and shareholders and create opportunities to better serve patients, customers, employees and society.

Our company-wide sustainability focus areas:



Access to Health



Employees



**Environmental
Sustainability**



Ethics & Values

One Health at MSD Switzerland

The health of people, animals, and the environment they share is closely linked and interdependent. At MSD Switzerland, we uphold the **One Health** approach by collaborating across multi-

ple disciplines — working locally, regionally, nationally, and globally — to prevent, detect and respond to health issues at the interfaces between humans, animals, and the environment.



Our efforts in Switzerland are aligned with our sustainability strategy.

At MSD, we continuously strive to make our working methods more ecological and to shape the healthcare system to be increasingly diverse and inclusive, as well as to strengthen the health literacy of patients worldwide. We are convinced that sustainable action is also the key to long-term success.

With our commitment, we contribute to the United Nations (UN) Sustainable Development Goals (SDGs) as part of the 2030 Agenda for Sustainable Development.

In doing so, we create added value for patients, our customers, society, and ourselves as a company.

National Future Day in November: Each year, MSD Switzerland invites employees to share their workplace with their children.

Our impact areas of focus



Access to Health

We aim to improve awareness, prevention and facilitate access

Our commitment to improving access to healthcare is grounded in meaningful collaboration with caregivers, authorities, research institutions, and patient associations.

By actively engaging with these stakeholders, we identify and address gaps in the patient journey and health literacy, ensuring that everyone receives comprehensive care and fully understands

their health. Additionally, our efforts in disease prevention contribute to better population health and more sustainable health care.

Examples of our initiatives supporting these goals include PINK CUBE Test Your Breast, Lucerne Health Trend Days, the Patient Sounding Board, and many more.



Initiated by MSD in 2022, PINK CUBE Test Your Breast is a unique initiative to promote breast cancer prevention in Switzerland.



Employees

Driving diversity, inclusion and engagement for our people

We are committed to a diverse, skilled, and engaged workforce. We foster a positive work environment and well-being through community building and initiatives that promote inclusion and diverse perspectives.



Employee Business Resource Groups (EBRGs)

Led by passionate employees, serve as cultural and educational resources. In Switzerland, we have seven active EBRGs, including Rainbow Alliance, League of Employees of African Descent, capABILITY, Women's Network, Next Gen Network, Asia Pacific Association, and Alianza.

Gender Equality

We strive for equal opportunities and a 50/50 gender balance across all levels. Our Gender-Neutral Parental Leave Policy reflects this commitment.

One MSD

This initiative supports an inclusive culture and employee well-being through company events and volunteering opportunities.



Environmental Sustainability

Energy efficiency and zero emissions

As a company, MSD is committed to achieving net-zero greenhouse gas (GHG) emissions across our global operations (Scopes 1, 2, and 3) by 2045. Reaching our sustainability goals, 100 % of the electricity purchased for our MSD Switzerland facilities comes from renewable energy sources. We continuously strive to minimize our environmental footprint at these sites.

LEED Platinum is the highest global standard for sustainable building design. Our office in The Circle in Zurich and our new Rösslimatt headquarters in Lucerne (opening 2026) both hold this certification, reflecting our commitment to environmental responsibility and energy efficiency. Additionally, The Circle is **WELL Gold** certified, recognizing its focus on occupant health and well-being.



MSD's LEED Platinum Certificate



MSD's WELL Gold Certificate



Ethics & Values

Foster a “Speak up” culture

We are committed to fostering a culture of safety where employees feel empowered to voice their concerns, a commitment reinforced through leadership communication and initiatives such as individual psychological safety training. Additionally, MSD has appointed Ethics Ambassadors at each site who are connected to the global program at www.msdetics.com and receive ongoing training to uphold our ethical standards.

In 2024, over 99 % of our employees in Switzerland completed the annual Leading With Ethics & Integrity training series, designed to build trust and promote inclusion and well-being within our workplace.



For more information about us:

www.msd.ch



Follow us on:

